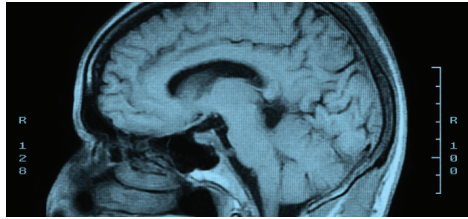




Theme: Use Your Brain

The cerebral cortex is nearly symmetrical, with the left and right hemispheres that are approximate mirror images of each other. Unscramble the words below to reveal some terms about the lobes, folds and cortical divisions.



1. rnlafot

1.

2. ltarpae

2.

3. lpiacoict

3.

4. meporalt

4.

5. suestru

5.

6. rnlcate uslsuc

6.

7. oerpisru

7.

8. rrieionf

8.

9. ryugs

9.

10. lealrat slucus

10.

11. eelrbarc orxcte

11.

12. cicltaro idisnvosi

12.

13. amylsritcme

13.